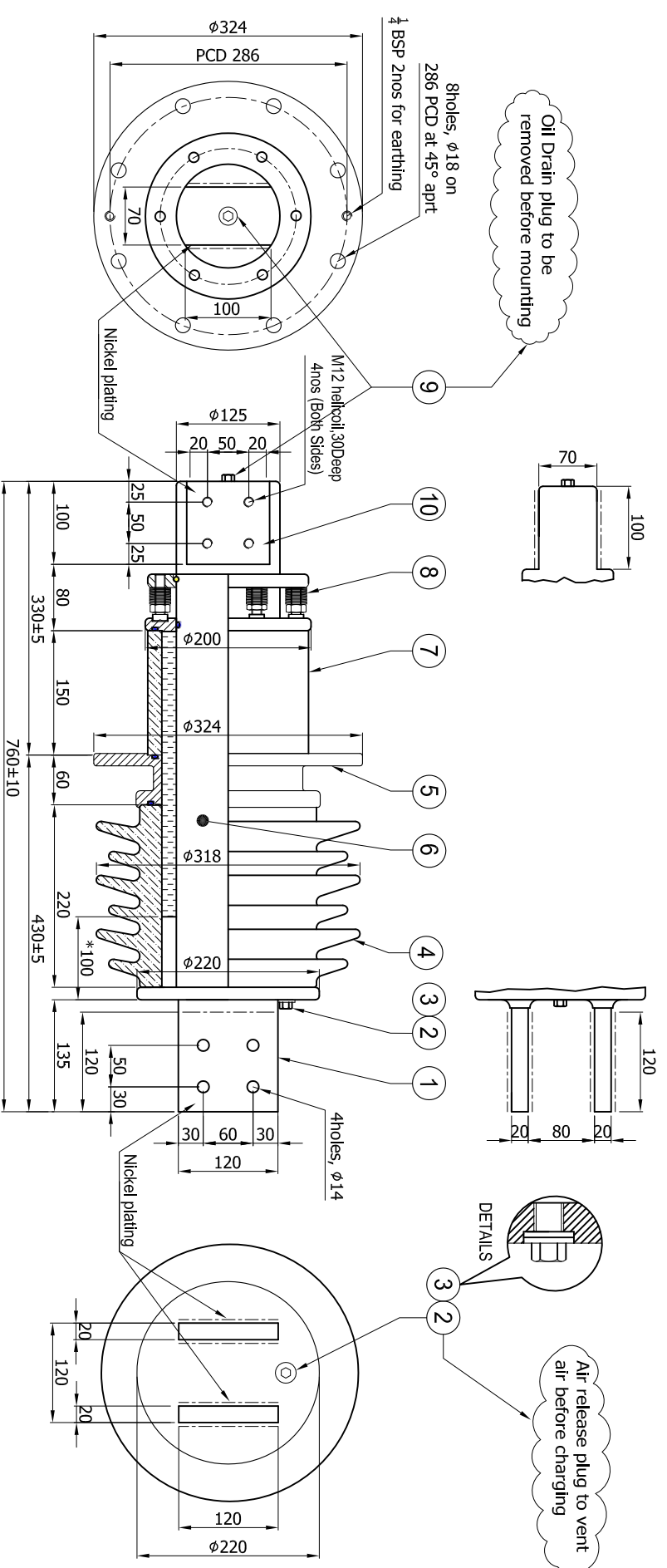


ALL DIMENSION ARE IN mm.



PARTS				
NO	DESCRIPTION	QTY	MATERIAL	FINISH
1	Air end terminal	2	Aluminum alloy	Nickel plated
2	Oil filling plug	1	Brass	Nickel plated
3	Gasket	2	Viton	
4	Upper insulator	1	Porcelain	
5	Mounting flange	1	Aluminum alloy	Powder coated
6	Center conductor	1	Aluminum alloy	
7	Lower insulator	1	Porcelain	
8	Spring assembly	6	Steel EN47	
9	Oil drain plug	1	Brass	Nickel plated
10	Bottom terminal	1	Aluminum alloy	Nickel plated

TECHNICAL DATA	
Model	HOA-2406
Standard	IEC 60137
Rated voltage	24 kV
Rated current	6300 Amps
Basic insulation level	125 kVp
1 min. AC test voltage	50 kV
Total creepage length	600 mm
Short time current	200 kA, 2 Sec.
Cantilever withstand	3150 N

GENERAL	
Type	: Oil Communicating
Mounting	: Vertical
Approx. wt	: 50 kg
Quantity oil	: 2.5 ltr.
Terminal	: Aluminum alloy
Finish of contact area	: Nickel plated

- NOTE:
1. Oil Communicating but sent with oil
 2. Remove plug ① and Drain oil
 3. Release air through plug ② before mounting and applying voltage
 4. Temperature rise should be <45° C at 3000A
 5. * N₂ gas column for non oil communicating

DRN	Tejas		24kV 6300A High Current Bushing
CHK	Esha		
APPD	DR		
DATE	6-4-2013		
CUST: ALSTOM		CODE: YHCBS0000091	
DRG NO: HOA024063100			REV. 0