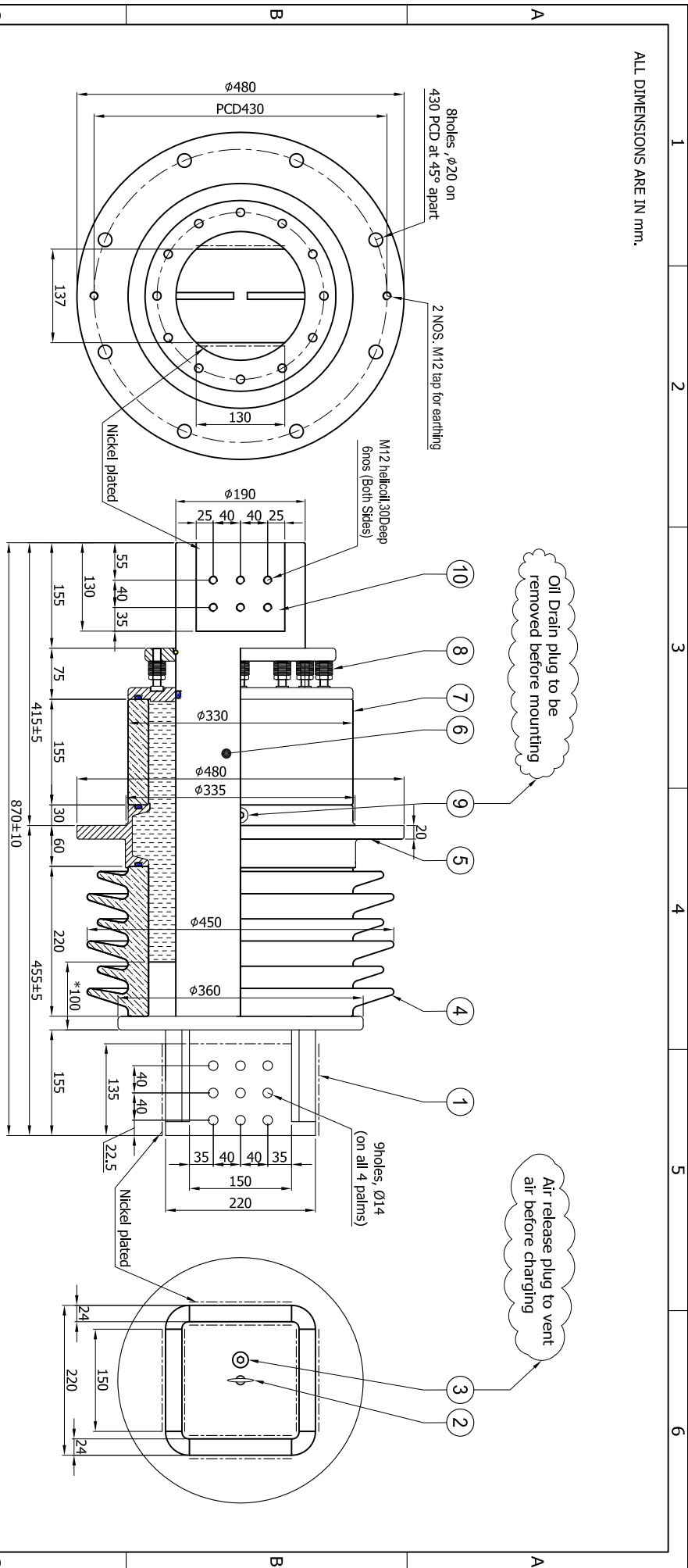


ALL DIMENSIONS ARE IN mm.



PARTS				
NO	DESCRIPTION	QTY	MATERIAL	FINISH
1	Air end terminal	4	Aluminum alloy	Nickel plated
2	Lifting EYE	1	MS HDG	
3	Air release plug	1	Brass	Nickel plated
4	Upper insulator	1	Porcelain	
5	Mounting flange	1	Aluminum alloy	Powder coated
6	Center conductor	1	Aluminum alloy	
7	Lower insulator	1	Porcelain	
8	Spring assembly	12	Steel EN47	
9	Oil drain plug	1	SS	
10	Bottom terminal		Aluminum alloy	Nickel plated

TECHNICAL DATA			
Model	HOA-2412		
Standard	IEC 60137		
Rated voltage	24 kV		
Rated current	12,500 A		
Basic insulation level	125 kVp		
1 min. AC test voltage	50 kV		
Total creepage length	600 mm		
Short time current	100 kA, 2 Sec.		
Dynamic current	200 kA p		
Cantilever withstand	3150 N		

GENERAL	
Type :	Oil Communicating
Mounting :	30° Max from vertical
Total weight :	110kg
Quantity oil :	11ltr.
Terminal :	Aluminum alloy
Finish of contact area :	Nickel plated

- NOTE:
1. Oil Communicating but sent with oil
 2. Remove plug and Drain oil before mounting
 3. Air release thru plug before apply voltage
 4. * N₂ gas column for non oil communicating

DRN	Tejas		
CHK	Eshta		
APPD	DR		
DATE	29-12-2012		
CUST :	SIEMENS	CODE :	YHCBS0000084
YASH HIGHVOLTAGE		GUJARAT, INDIA.	
24 kV, 12,500 A. Bushing			

Ref: YB036990109

SCALE:- 1:1

DRG NO : HOA024125100

REV. 1