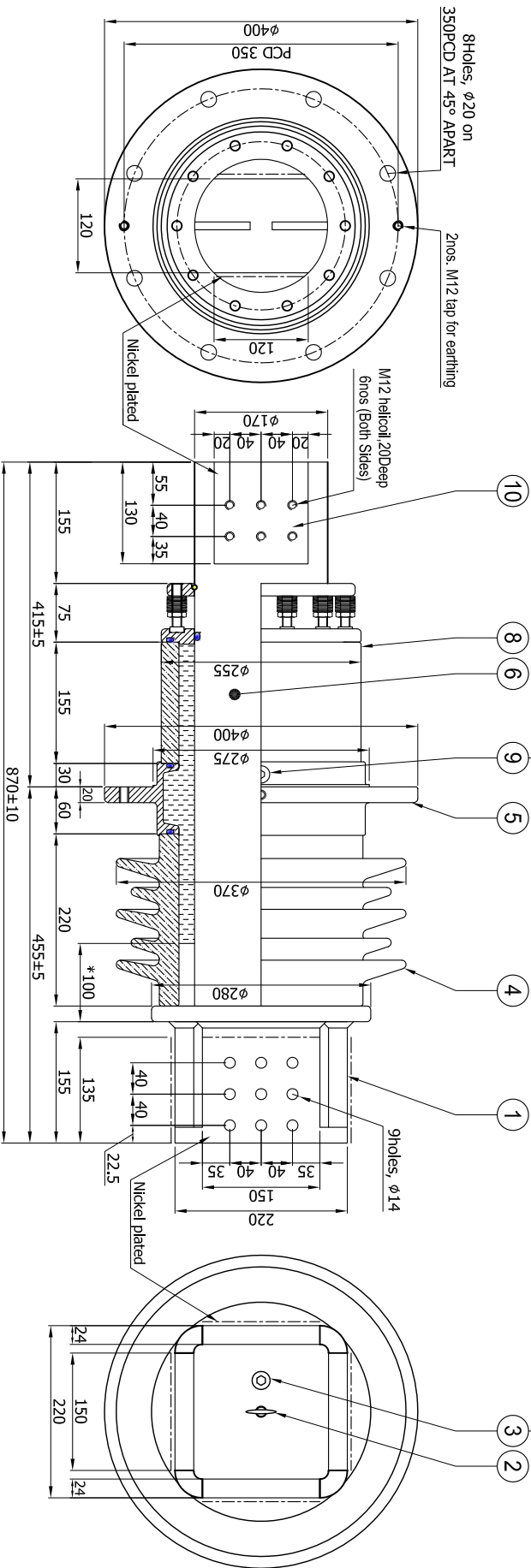


ALL DIMENSIONS ARE IN mm.



NO	DESCRIPTION	QTY	MATERIAL	FINISH
1	Air end terminal	2	Aluminum alloy	Nickel plated
2	Lifting EYE	1	MS HDG	
3	Air release plug	1	Brass	Nickel plated
4	Upper insulator	1	Porcelain	
5	Mounting flange	1	Aluminum alloy	Powder coated
6	Center conductor	1	Aluminum alloy	
7	Lower Insulator	1	Porcelain	
8	Spring assembly	10	Steel EN47	
9	Oil drain plug	1	SS	
10	Bottom terminal	1	Aluminum alloy	Nickel plated

TECHNICAL DATA	
Model	HOA-2410
Standard	IEC 60137
Rated voltage	24 kV
Rated current	10,000 Amps
Basic insulation level	125 kVp
1 min. AC test voltage	50 kV
Total creepage length	600 mm
Short time current	100 kA, 2 Sec.
Dynamic current	200 kAP
Cantilever withstand	315 kg

GENERAL	
Type :	Oil communicating
Mounting :	Vertical
Approx weight :	94 kg
Quantity oil :	5ltr.
Terminal :	Aluminum alloy
Finish of contact area :	Nickel plated

- NOTE:**
1. Oil Communicating but sent with oil
 2. Remove plug and Drain oil before mounting
 3. Air release thru plug before apply voltage
 4. * N₂ gas column for non oil communicating

DRN	Tejas		YASH HIGH VOLTAGE GUJARAT, INDIA.
CHK	Esha		
APPD	DR		
DATE	7-3-2013		
CUST: T&R		CODE: YHCBS0000004	24 kV, 10000 A. Bushing
DRG NO: HOA024100100		REV. 4	

Rev4: Modified technical data
 Rev3: Creepage 600 was 900 & Air length Length 455 was 500
 Rev2: Creepage 900 was 600 & Air length Length 500 was 455