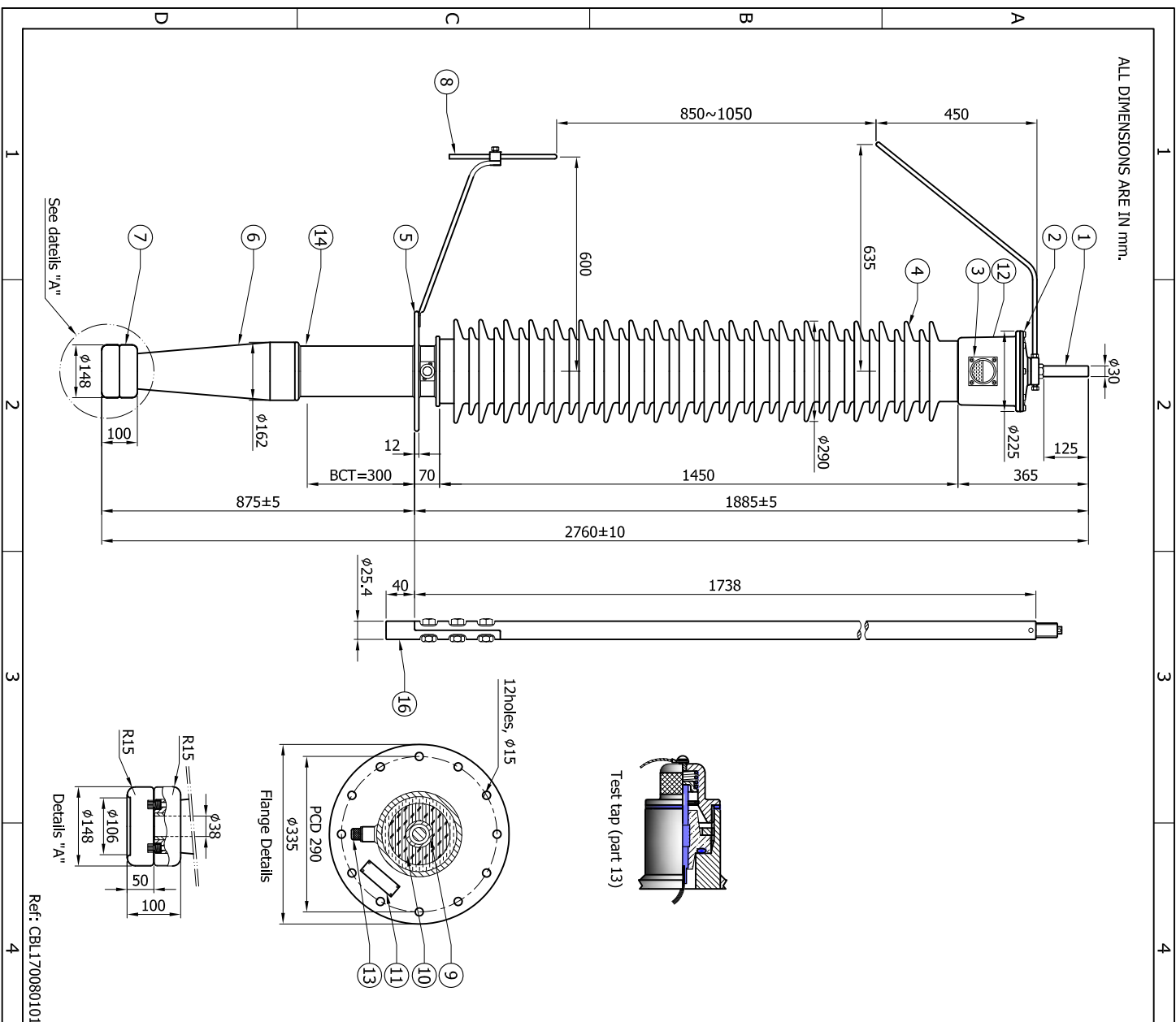


ALL DIMENSIONS ARE IN mm.



PART LIST			
NO	DESCRIPTION	MATERIAL	FINISH
1	HV. Terminal	Copper ETP	Nickel plated
2	Conservator	Aluminium alloy casting	Powder coated
3	Oil sight glass	Polycarbonate	
4	Upper insulator	Porcelain	Brown
5	Mounting flange	Aluminium alloy casting	Powder coated
6	Bottom insulator	Epoxy	Brown
7	Electrode	Aluminium alloy	Powder coated
8	Arching horn	MS HDG	
9	Center pipe	Aluminium alloy	
10	Condenser core	O.I.P.	
11	Rating plate	Aluminium	
12	Oil filling plug	SS	
13	Test tap	Aluminium	Anodized
14	Extension Pipe	Aluminium alloy	Anodized
16	Thinble	Copper ETP	Nickel plated

TECHNICAL DATA		
1	Type	Draw lead type (OIP condenser)
2	Rated voltage.. L-L	170 kV
3	Working voltage.. L-E	98 kV
4	Rated current	800 Amps
5	AC 1 min. test voltage	325 kV
6	Lighting impulse	750 kVp
7	Total creepage length	4250 mm
8	Max. mounting angle	30° Max from vertical
9	Angle during storage	10°
10	Standard	IEC 60137
11	Cartleaver withstand	1250 Newton
12	Short time current	25 kA for 2 Sec.
13	Approx weight	160 kg.
14	Oil quantity	15 Ltrs

DRN	Tejas		GUJARAT, INDIA.
CHK	Esha		
APPD		170kV 800A (300 BCT) Condenser Bushing	
DATE	21-6-2013		
CUST	BHEL	CODE: YCDBS0000132	
SCALE	1:1	DRG NO: CBL1700800B	REV. 0

This document is the exclusive property of YASH HIGHVOLTAGE INSULATORS PVT LTD and shall not be used, copied or communicated to third parties without its prior authorization. Rights of this document are reserved. Transfer of the document in any form is strictly forbidden to parties other than our customer.

IF IN DOUBT - PLEASE ASK.